

Assembly Instructions

WB400 Walk Behind Drop Salt Spreader

Check contents of box against the parts list to make sure all components are included. When ordering replacement or spare parts refer to the parts list for part numbers.

Tools Needed for Assembly

- (2) 3/8" Wrenches
- (2) 1/2" Wrenches
- (1) 3/32" Allen Key



Operating Instructions:

1. Before filling Hopper, ensure that the Restrictor Plate is fully closed and the screen is in place.
2. Move and tighten the CAM to the desired setting. See fig 4.
3. Begin moving forward with the spreader.
4. Adjust flow as needed with lever.
5. Before stopping, close flow gate.

Maintenance:

1. The Hopper and Spinner should be completely emptied and cleaned before storage.
2. The Spreader should be washed and dried before storage.
3. Check that the Restrictor Plate and Linkage move freely. Clear out any debris between the Restrictor Plate & the Hopper.
4. Check torque of all fasteners on a monthly basis.

Operation Note:

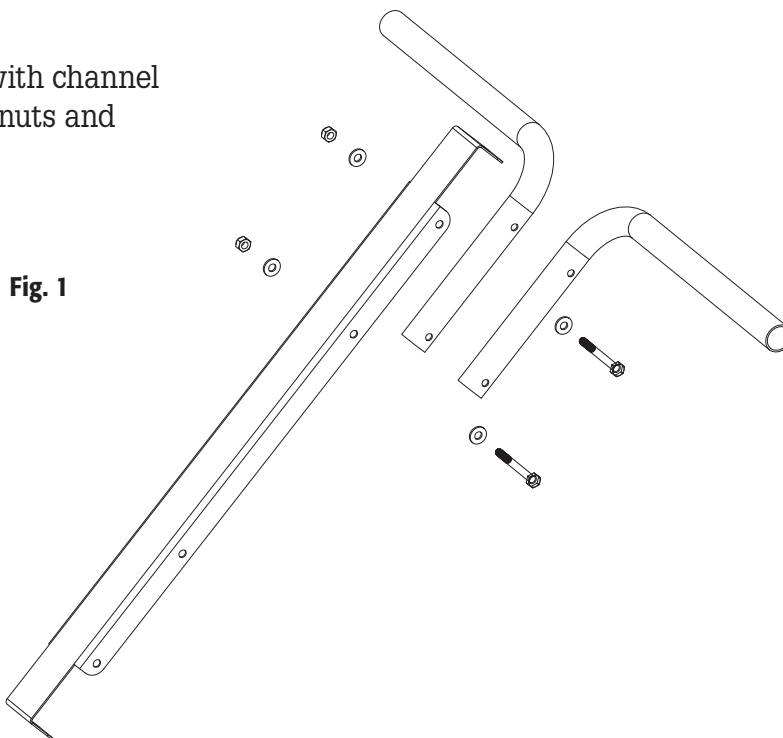
1. The Spreader is designed to be operated at a brisk walking pace (approx. 3 mph). Walking slower or faster will alter the distribution pattern & amount of the material, as will the moisture content of the material & other environmental factors.

WARNING

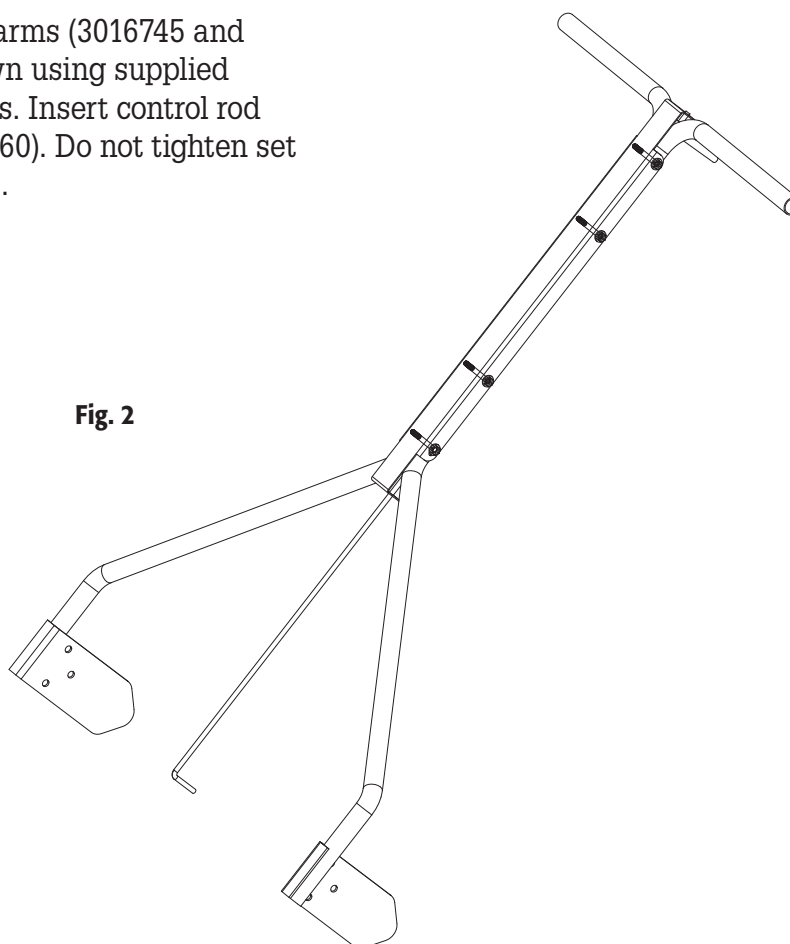
When filling hopper, make certain there are no large objects within the material. Objects larger than the openings in the Screen may cause the spreader to clog or even damage the drive system. Never leave material in the hopper when not in use.

Assembly:

1. Assemble top handles (3016747) with channel (3016746) using supplied $\frac{1}{4}$ -20 bolts, nuts and washers. See fig 1.

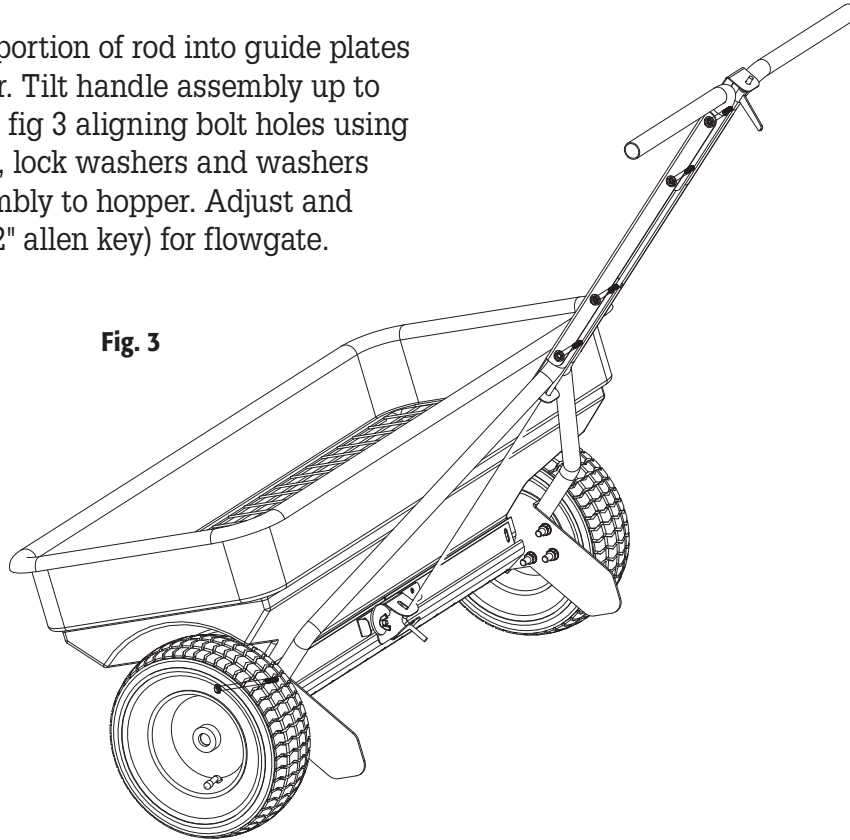


2. Assemble lower support arms (3016745 and 3016744) in channel as shown using supplied $\frac{1}{4}$ -20 bolts, nuts and washers. Insert control rod (3016748) and handle (3016760). Do not tighten set screw at this time. See fig 2.



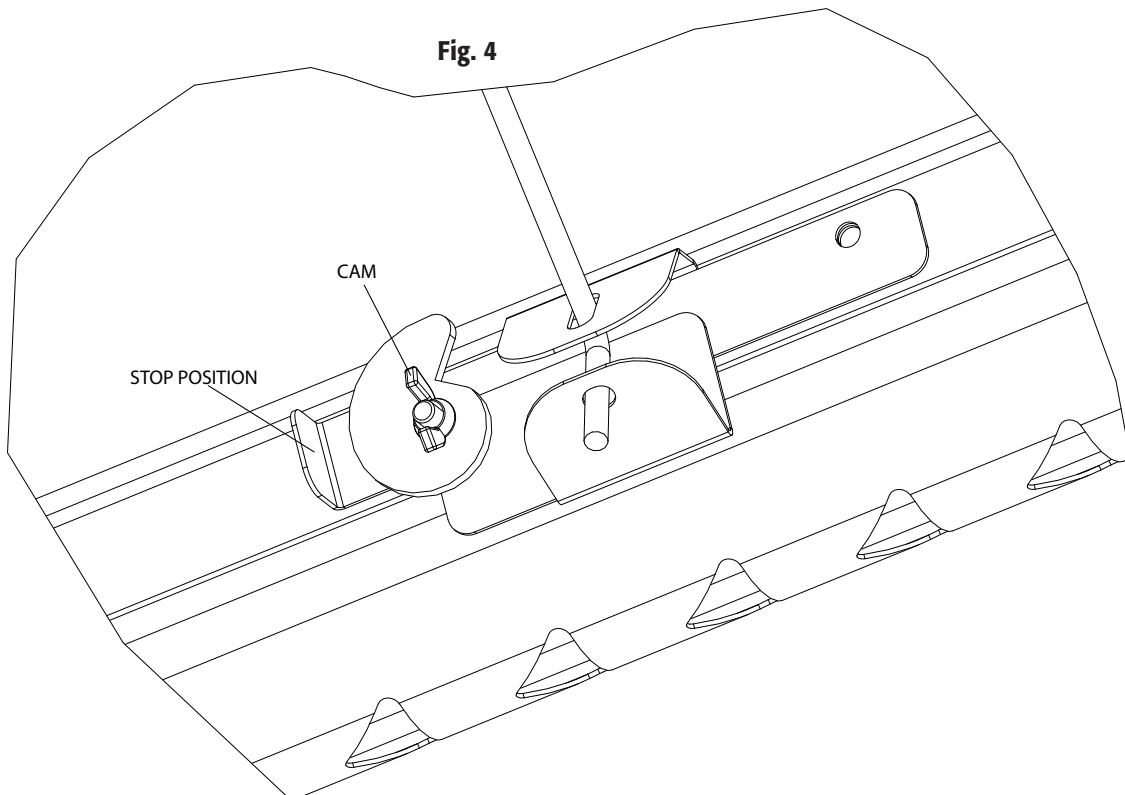
3. Insert L-shaped portion of rod into guide plates as shown on hopper. Tilt handle assembly up to hopper as shown in fig 3 aligning bolt holes using supplied bolts, nuts, lock washers and washers fasten handle assembly to hopper. Adjust and tighten handle (3/32" allen key) for flowgate.

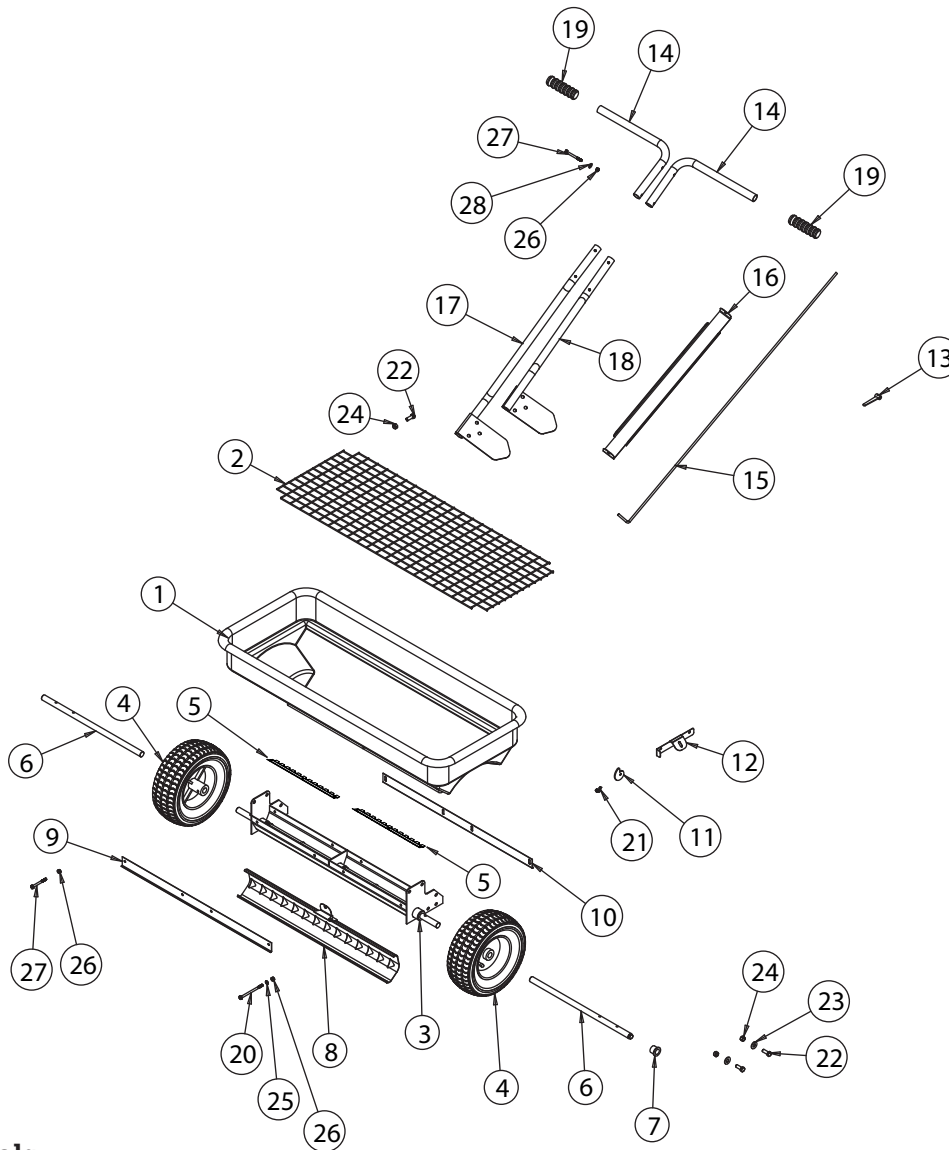
Fig. 3



4. Loosen wing nut, rotate cam to desired stop position and re-tighten wing nut.

Fig. 4





Bill of Materials

ITEM	PART NO.	QTY.	DESCRIPTION
1	3016737	1	Hopper, Walk Behind LG
2	3016738	1	Screen, Walk Behind, Large
3	3016765	1	Frame, Weldment, Spreader
4	3016736	2	Wheel, Drive, Walk Behind
5	3016722	4	Auger, Walk Behind
6	3016735	2	Axel, Walk Behind
7	3016734	1	Bushing, Nylon
8	3016730	1	Discharge Door, Weldment
9	3016727	1	Plate, Retainer, Front
10	3016728	1	Plate, Retainer, Rear
11	3016749	1	CAM, Flowgate
12	3016731	1	Plate, Guide Rod
13	3016760	1	Handle, Walk Behind, LG
14	3016747	2	Handle, Walk Behind, LG
15	3016748	1	Rod, Lever, Flowgate
16	3016746	1	Channel, Handles
17	3016745	1	Support Arm, Weldment, RH
18	3016744	1	Support Arm, Weldment, LH
19	3009135	2	Grip, Handle, WB
20	3016764	1	1/4-20 x 4 Bolt, SST
21	3016751	1	Nut, Wing 1/4-20 SST

ITEM	PART NO.	QTY.	DESCRIPTION
22	3016740	4	Screw, HHC-3/8-16 x 1/2 SST
23	-	2	Washer, Flat 3/8 USS SST
24	-	3	Nut, Nylock 3/8-16 x 7/16 SST
25	-	1	Washer, 1/4" Spring Lock SST
26	-	3	Nut, Nylon Insert 1/4-20 SST
27	3016761	2	1/4-20 x 2.50 Bolt, SST
28	-	1	Washer, Flat 1/4 SAE SS

Warranty

Buyers Products Co. warrants all truck/trailer hardware manufactured or distributed by it, to be free from defects in material and workmanship for a period of one year from date of shipment. Parts must be properly installed and used under normal conditions. Any product which has been altered, including modification, misuse, accident or lack of maintenance will not be considered under warranty. Normal wear is excluded. The sole responsibility of Buyers Products Co. under this warranty is limited to repairing or replacing any part or parts which are returned, prepaid, and are found to be defective by Buyers Products Co. Authorization from Buyers Products Co. must be obtained before returning any part. No charges for transportation or labor performed on Buyers' products will be allowed under this warranty.